



AquaSurge[®]PRO Adjustable Flow Pump

Remote-Controlled Skimmer and Pondless[®] Waterfall Vault Pump

For Models:

- 2000-4000 (Item #45009)
- 4000-8000 (Item #45010)

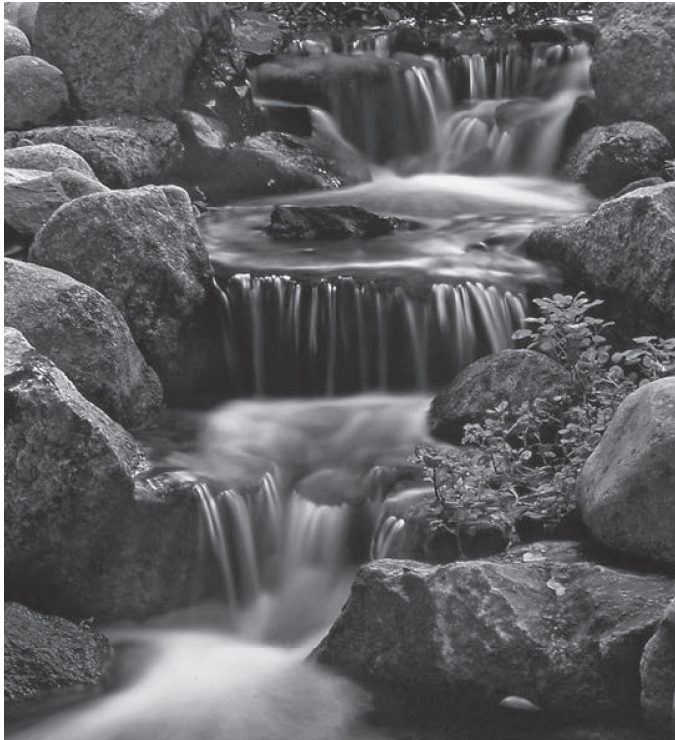


Engineered for
Continuous Use



www.aquascapeinc.com

Thank you for choosing the AquaSurge^{PRO} Remote-Controlled pump. Aquascape our goal is to provide our customers with the best valued products in water gardening. We hope you enjoy your purchase and thank you for choosing Aquascape. *Your Paradise. Our Passion.®*



AquaSurge^{PRO} Adjustable Flow Pump



3 Year Warranty

The AquaSurge^{PRO} Pond Pump is guaranteed for three years from date of purchase. Proof of purchase required. Warranty does not cover damage resulting from negligent handling, misuse or lack of reasonable maintenance for care. Warranty is valid against defect due to material and the company's workmanship only. The sole obligation shall be to replace the defective unit with a suitable replacement unit. Units should be checked for proper operation prior to returning as defective. No liability for loss or damage of any nature or kind, whether arising out of or from the use of the product, whether defective or not defective, is assumed by Aquascape, Inc. or its affiliates.

Contact Us

For more information about our company or products please visit our website at www.aquascapeinc.com or call (US) 1-866-877-6637 (CAN) 1-866-766-3426.

Table of Contents

Introduction	3
Safety Information	4
Installation	4
Operation and Maintenance	6
Troubleshooting	8



VISIT OUR WEBSITE



DOWNLOAD A FREE COPY OF OUR CATALOG

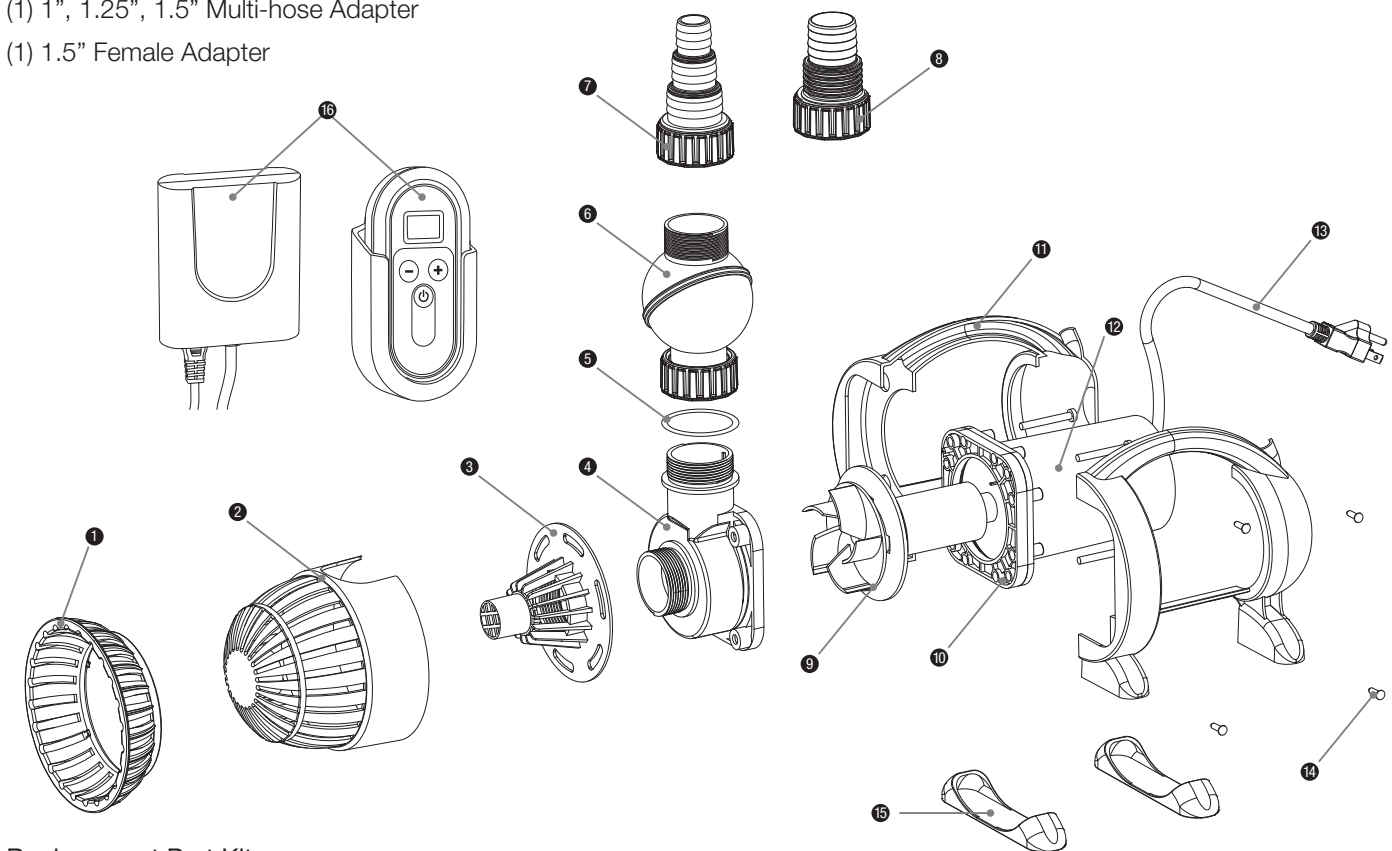
Introduction

The Aquascape AquaSurge®PRO asynchronous skimmer and waterfall pumps accomplish what most other pumps only aspire to achieve. The combination of energy efficient performance and ease of maintenance, makes this the pump of choice for discriminating professionals. The ability

to adjust flow makes it easy to select the right pump for any application. AquaSurge®PRO pumps are ideal for use in skimmer and falls filter systems, as well as Pondless® Waterfall filter vaults.

Contents & Pump Parts:

- (1) AquaSurge®PRO Pump
- (1) Remote Control
- (1) Receiver
- (1) 1.50" Rotational Ball Output
- (1) 1.5", 2" Multi-hose Adapter
- (1) 1", 1.25", 1.5" Multi-hose Adapter
- (1) 1.5" Female Adapter



Replacement Part Kits

#91063 AquaSurge®PRO Pump Intake Screen Kit

AquaSurge®PRO 2000 and 3000 only

- ① Filter Stand Ring
- ② Outer Filter
- ③ Inner Filter

#45011 AquaSurge®PRO Pump Intake Screen Kit

AquaSurge®PRO 4000 and 5000 only

- ① Filter Stand Ring
- ② Outer Filter
- ③ Inner Filter

#91065 AquaSurge®PRO Pump Discharge Fitting Kit

- ⑤ Flat Rubber Washer
- ⑥ 1.5" Rotational Ball Outlet, Threaded Collar
- ⑦ 3/4" 1" 1.25" Multi-Hose Adapter & Threaded Collar
- ⑧ 1", 1.25", 1.5" Multi-Hose Adapter & Threaded Collar

#91066 AquaSurge®PRO Pump Water Chamber Cover & O-Ring Kit

AquaSurge®PRO 2000 - 4000 only

- ④ Water Chamber Cover
- ⑩ O-Ring Pump Boot

#45014 AquaSurge®PRO Pump Water Chamber Cover & O-Ring Kit

AquaSurge®PRO 5000 - 8000 only

- ④ Water Chamber Cover
- ⑩ O-Ring Pump Boot

#91068 AquaSurge®PRO Pump Handle & Feet Kit

AquaSurge®PRO 2000 - 4000 only

- ⑪ Right & Left Handles
- ⑭ Handle Screws
- ⑮ Rubber Feet

#45012 AquaSurge®PRO Pump Handle & Feet Kit

AquaSurge®PRO 5000 - 8000 only

- ⑪ Right & Left Handles
- ⑭ Handle Screws
- ⑮ Rubber Feet

#45029 AquaSurge®PRO Remote and Receiver Kit

- ⑯ Remote & Receiver

Replacement Parts Not Available

- ⑨ Rotor Assembly Impeller
- ⑫ Pump Body
- ⑬ Power Cord

Safety Information



WARNING: Risk of electric shock – This pump has not been approved for use in swimming pool or marine areas



WARNING: To provide continued protection against risk of electric shock, connect to properly grounded, ground fault circuit interrupter (GFCI) outlets only, using the following guidelines:

- (A) Have a qualified electrician install a properly grounded receptacle outlet, acceptable for outdoor use and protected from snow and rain.
- (B) Inspect cord before using.
- (C) Do not using extension cords.
- (D) Any wiring of pumps should be performed by a qualified electrician to ensure code compliance and user safety.
- (E) Unplug pump at receptacle outlet when not in use or before removal from pond.
- (F) To reduce risk of electrical shock, all wiring and junction connections should be made per local

codes. Requirements may vary depending on usage and location.

- (G) The power cable should be protected at all times to avoid punctures, cuts, bruises and abrasions.
- (H) Never handle power cords with wet hands.
- (I) Do not remove cord and strain relief. Do not connect conduit to pump.
- (J) Do not use power cable to lift pump.



Installation

- Always operate the pump fully submerged; or if using in-line ensure a constant source of fresh water. Failure to do so may overheat the pump and cause it to fail, voiding the warranty.
- Use only in fully assembled state, paying particular attention to ensure that both the outer and inner filter screens are attached to the pump. Failure to operate the pump without the filter screen will allow large debris to enter the pump and cause the pump to fail, voiding the warranty.
- Do not wear loose clothing that may become entangled in the impeller or other moving parts.
- Keep clear of suction and discharge openings. DO NOT insert fingers in pump with power connected.
- Do not pump hazardous materials or liquids, such as oil, saltwater or organic solvents.
- Do not block or restrict discharge.
- Products returned must be cleaned, sanitized, or decontaminated, as necessary, prior to shipment to ensure that employees will not be exposed to health hazards in handling said material. All applicable laws and regulations shall apply.



IMPORTANT: Aquascape, Inc. is not responsible for losses, injury, or death resulting from a failure to observe these safety precautions, misuse or abuse of pumps or equipment.

AquaSurge®PRO Specifications

- Input Voltage: 120V AC
- Input Frequency: 60 Hz
- Submersible pump
- For outdoor or indoor use
- Thermally protected
- This pump has been evaluated for use with water only
- Input Amps & Wattage: *See chart on next page*



VIDEO ON AQUASURGE
PUMP MAINTENANCE &
TROUBLESHOOTING TIPS

AquaSurge®PRO Pump Specs

Model Number	2000-4000	4000-8000
Item Number	45009	45010
Average Pond Size Recommendation	2000-4000 US gallons	4000-8000 US gallons
Maximum Flow Rate	3947	7793
Maximum Head Height	18.55'	27.89'
Motor Type	Asynchronous	Asynchronous
Wattage	180 - 215 *	500 - 660*
Amperage	1.82	5.5
Power Cord Length	20 ft	20 ft
Discharge Hose Diameter	1", 1.25", 1.5", 2"	1", 1.25", 1.5", 2"
Warranty	3 Year Limited	3 Year Limited

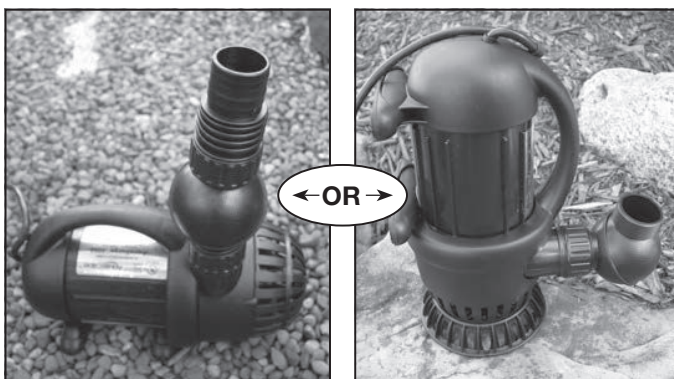
*Wattage range depending on remote control flow setting

Typical Installation in a Skimmer or Pondless® Waterfall Filter System

- Do not submerge AquaSurge®PRO pump directly into the pond. The AquaSurge®PRO pump is designed to be placed inside a skimmer, Pondless® vault, sump or basin. Please consider the Aquascape AquaForce® solids handling pump if your application does not have a filter and requires a pump that can be placed directly into the pond.
- The AquaSurge®PRO pump is designed to be installed horizontally on the vibration and noise reducing rubber feet. The pump can also be mounted vertically, if needed, by attaching the Filter Stand Ring on the Outer Filter Screen, included with your pump.



AquaForce® Pond Pump



- The AquaSurge®PRO includes a wide assortment of fittings to choose from. Select the appropriate fitting or fittings needed for your application.

PLEASE NOTE: If using the AquaSurge®PRO Check Valve, please follow the installation instructions included with the Check Valve for proper plumbing steps

- The threaded collar on all of the fittings enables the AquaSurge®PRO pump to be installed and removed without the need for any tools. *(Do not use tools to install the fittings into the pump discharge. Fittings need to be only hand tight).*



Multi Hose Adapter



- The extremely versatile Rotational Ball Outlet provides you the ability to adjust the pump discharge to the perfect position your water feature set up requires. Loosen the threaded collar on the rotational ball and rotate to desired position. A flat rubber washer seal is included to ensure a hand-tight and leak-free connection. Make sure this flat rubber washer is in place before installing the fittings.



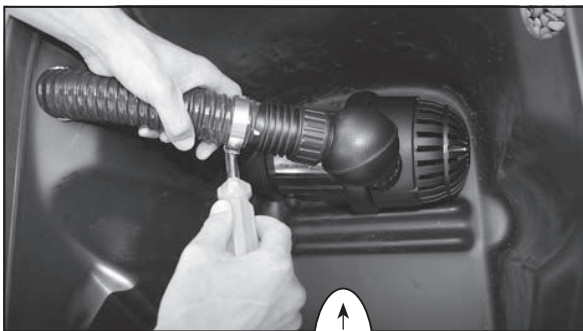
- Install the right sized Multi-Hose Adapter based on the diameter of the tubing you are using.



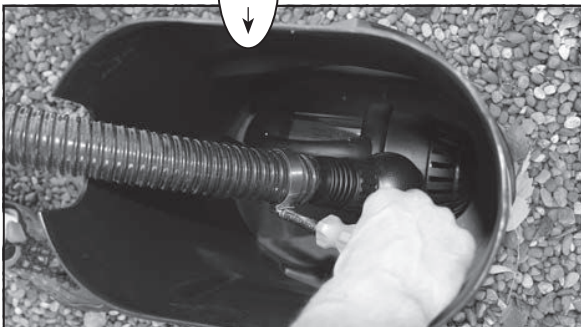
- If using pipe with a larger diameter than the smaller fittings of the Multi-Hose Adapters, cut off the smaller section to avoid any flow restriction.



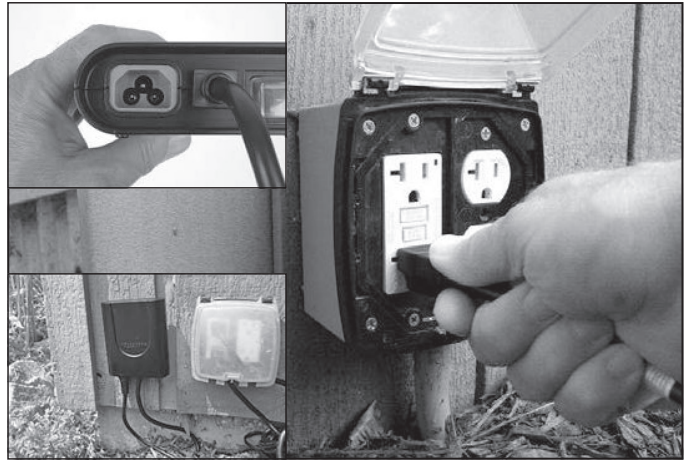
- In some instances the tubing/hose may be tight and difficult to use with hose fitting barbs. If this is the case we recommend heating the hose with the use of a hair dryer or simply dipping the hose for a few seconds in very hot water. Lubrication can also be used; we recommend silicone grease or olive oil. We recommend putting the fitting on the filter before attaching the tubing/hose. Once the fitting is in place, attach the tubing/hose onto the fitting with a twisting motion pushing it into place.
- Lower the pump into the skimmer (refer to image) or Pondless® filter (refer to image) and rotate the Rotational Ball Output to line up with the tubing. Attach tubing to the fitting and then tighten a hose clamp (not included) to secure tubing onto the fitting.



Skimmer application



Pondless® Waterfall application



- It is recommended to mount the receiver above the ground on a post, fence or wall.
- Plug the pump into the receiver making sure that blue plug gasket is in plug port.
- Plug the Receiver into an external GFI-rated electrical source.

In-Line Operation

- The AquaSurge®PRO pump can also be operated “in-line” by attaching a pipe connected directly from the pond (or aquarium) to the male-threaded pump inlet. In this case the water must be pre-filtered of debris in order to prevent any damage to the pump or impeller. The pump must NEVER be operated dry without water. This pump is water-cooled and requires water flowing through the pump at all times for the pump to operate correctly and stay cooled so it doesn't overheat.

Operation and Maintenance

Remote Control and Receiver Operation

- **Receiver Switch** – The Receiver includes a switch that allows the pump to be operated in the two following modes:

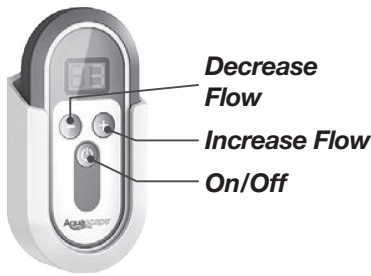
- Position 1 - Operated by Remote Control
- Position 2 - Bypass the Remote, and operate at full flow-rate

In the event of a power loss when operating in the Remote Control setting, the pump will revert to the last flow-rate setting.



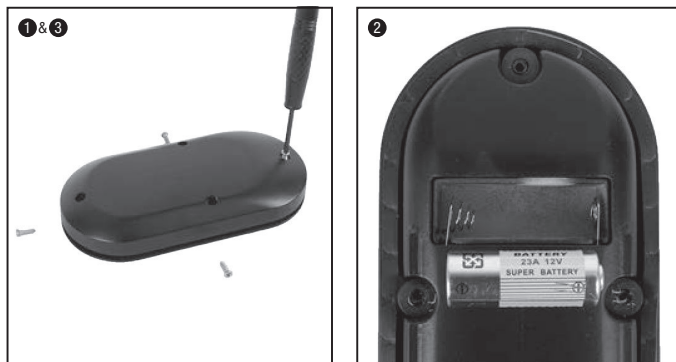
• **Remote Control –**

The Remote Control includes the ability to turn the pond on, and adjust the flow of the pump. Make sure the switch, on the Receiver, is in the Remote Control setting in order for the Remote to work properly. The Remote Control has an approximate range of 150 feet. The range of the Remote may be reduced if there are obstacles between the Remote and Receiver. Use the included mounting holster provided to provide a location to store the remote control. It is recommended to mount the holster in an area that is protected from the outdoor elements.



PLEASE NOTE: The Remote Control and Receiver are paired together with their own unique frequency. For this reason Remote Control replacement kits include both Remote Control and Receiver.

• **Battery Installation**

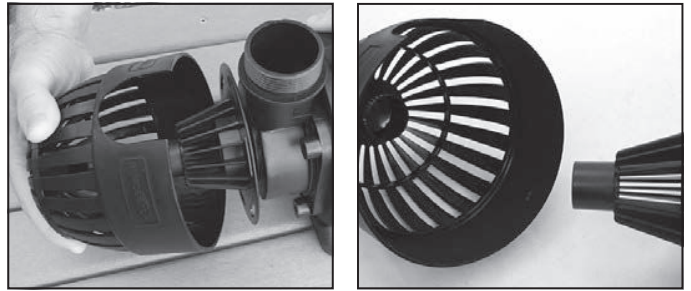


1. Remove 4 screws. Remove back cover plate.
2. Place battery in battery compartment.
3. Place back cover and install screws.

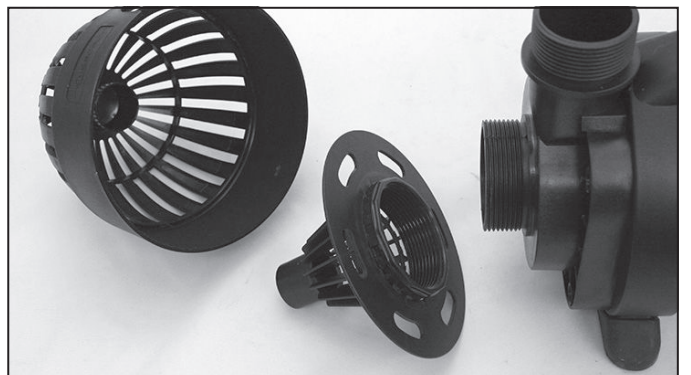
• **Filter Screens –** Do not remove the outer or inner filter screens while operating the pump. Failure to operate the pumps without the filter screens will allow large debris to enter the pump causing the pump to fail voiding the warranty.

• **Filter Screen Cleaning –** We recommend inspecting your pump on a regular basis, to make sure it is functioning properly. If you notice the water flow rate diminish it may be due to the pump's filter screen becoming clogged with debris. Always disconnect the power before performing maintenance on the pump. In many cases the clogged screen can be cleaned by reaching in the filter and removing, by hand, any debris from the filter screen. If there is a lot of debris and/or the debris is difficult to clean you may need to disconnect the threaded collar on the fitting and remove the pump from the filter for a more thorough cleaning. A garden hose can be used to spray off any debris stuck on the filter screen. Be sure to replace the screen and make sure it is firmly attached to the pump body before lowering the pump back into the filter box.

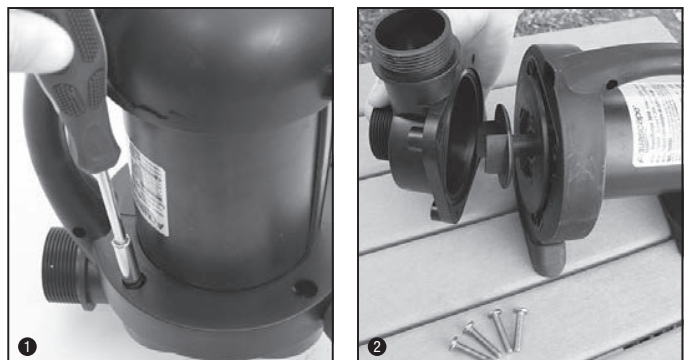
• The outer screen is designed to pop off when it is gently pulled from either side.

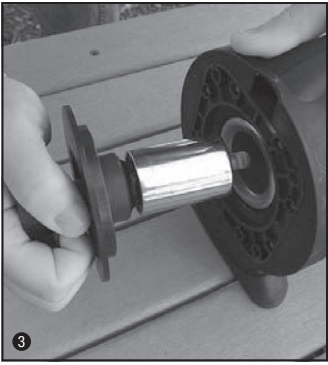


• The inner filter screen is threaded on and can be removed by unscrewing counterclockwise.

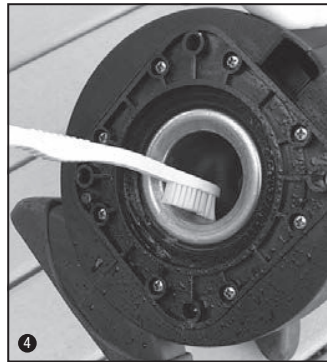
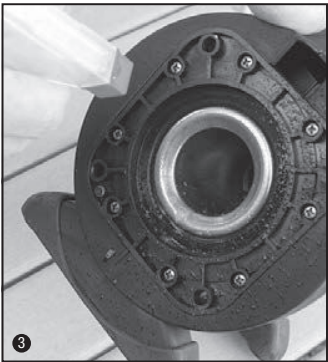
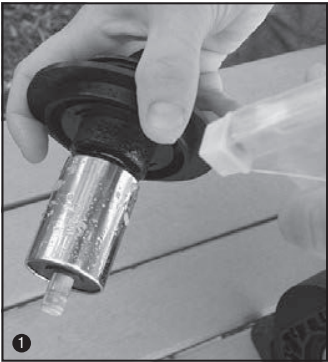


• **Internal Pump Cleaning –** If you have thoroughly cleaned the filter screens on the pump and still have diminished flow rates, you will need to remove the water cover chamber and inspect the impeller rotor assembly.





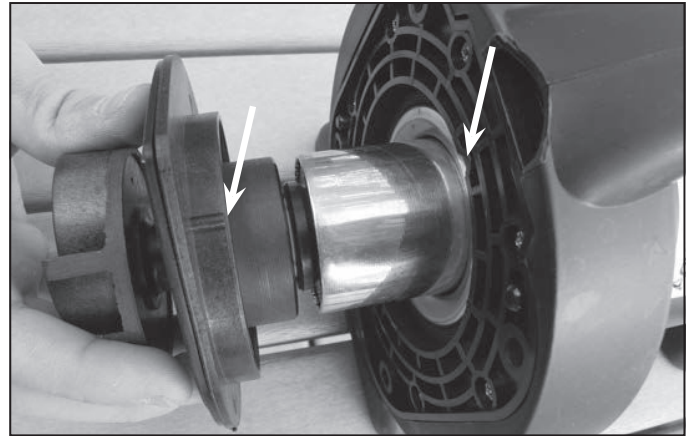
- If your rotor assembly impeller and internal pump body have excessive scale build-up, clean with a mild acid, such as white vinegar or non-abrasive calcium, lime and rust remover product, using a sponge or soft-bristled brush that won't scratch the stainless steel. Removing scale build-up will allow your pump to run like new again.



- When re-assembling the pump, be sure to align the raised key on the impeller flange to the matching notch in the face of the pump flange.



VIDEO ON AQUASURGE
PUMP MAINTENANCE &
TROUBLESHOOTING TIPS



- **Winter Storage** – If concerned about possible freeze damage, disconnect the threaded collar on the fitting and remove the pump from the filter (Be careful not to lose the flat rubber washer). Clean the pump and inlet screens with fresh water and store the pump in a frost-free location. The pump can be run during freezing weather, if desired, but the pump should be removed in the event of a power failure to prevent any freeze damage to either the pump or the piping.

Troubleshooting

- **Reduced Water Flow**

- Pump or plumbing may be clogged. It may be necessary to clean the filter screens and impeller.

- **Pump Hums and Doesn't Push Water**

- Pump or plumbing may be clogged. It may be necessary to clean the filter screens and impeller
- Remove the water chamber cover and inspect and clean the impeller rotor assembly and internal pump body
- Make sure nothing is blocking or wrapped around the impeller.
- Make sure the pump is receiving the correct voltage.

- **Pump Not Working**

- The ground-fault circuit-interrupter (GFCI) may have tripped
- The pump is not receiving the correct voltage.
- Remote Control Not Working
- Check to make sure the switch located on the Receiver is in the Remote Control position.
- Check the label on the back of the Receiver and transmitter to make sure they are paired to the same frequency.
- Check to make sure the battery is installed properly. Replace battery if needed.

For more information about our company or products, please visit our website at www.aquascapeinc.com or call us at (US) 1-866-877-6637 (CAN) 1-866-766-3426